

### Reliable Contaminant Removal

The effective removal of metal contamination from your manufacturing process is critical to ensure product quality is optimised and to afford maximum protection of your customers and your business. METTLER TOLEDO Safeline provides a range of options suitable for integration with all leading vacuum fillers and processing equipment including **Handtmann, Vemag, Risco**, etc.

### Stop-on-Detect Capability

HDS systems incorporate stop-on-detect functionality generating a signal to control vacuum filler operation enabling contaminated product to be purged from the pipeline.

### A Choice of Reject Valves

A selection of heavy duty, stainless steel, pneumatic reject valves with quick release couplings are available to automatically redirect process flow into a reject bin when metal contamination is identified.

- Hygienic easy clean designs
- Food industry standards approved contact parts
- Ball valve or plug valve design
- Sealing up to IP69K for the harshest environments
- Specified to suit actual product
  - High/low viscosity products
  - High/low speed throughput



### Flexibility to Integrate with Linker Systems

Optional HDS linker extension kits are available for use in linked sausage manufacturing applications. These kits include the necessary drive extension shaft and a hinged linker plate to provide effortless installation of the detector between the vacuum filler and linking machine.



# Metal Detection



### HDS Pipeline System

- Maximum Detection Performance
- Suitable for Harsh Environments
- Easy Process Line Integration

[www.mt.com/metaldetection](http://www.mt.com/metaldetection)

for more information

## HDS Pipeline Systems Metal Detection for Vacuum Filler Applications

**Mettler-Toledo Safeline Limited**  
Montford Street,  
Salford,  
M50 2XD,  
UK.

Tel: +44(0) 161 848 8636  
Fax: +44(0) 161 868 8595  
E-mail: [safeline.info@mt.com](mailto:safeline.info@mt.com)

Subject to technical changes  
© 05/09 Mettler-Toledo Safeline Limited  
Printed in the UK  
SLMD-UK-PO-BRO-HDSPv2-0509

**METTLER TOLEDO**

# Metal Detection for Vacuum Fillers

## High Performance in Harsh Environments

**METTLER-TOLEDO Safeline HDS pipeline metal detection systems are at home in the most demanding food processing environments.**

**Designed for easy integration with other process equipment, the space saving design can be configured through the use of a range of accessories to suit continuous, linked or clipped sausages and other food products in natural or collagen cases.**

### High Sensitivity for Maximum Security

The use of Safeline's advanced detection coil technology combined with new enhanced filtering techniques deliver unparalleled on-line sensitivity to all metal types. Ferrous, non-ferrous and normally difficult to identify non-magnetic stainless steel contaminants are easily detected.

HDS Pipeline systems are also able to find non-spherical contaminants such as metal clips, wire, swarf and slithers of metal. These can exhibit an orientation effect making them a challenge for most other metal detectors to locate.

The advanced coil design and market leading software also provide exceptional levels of on-line stability minimising instances of false triggering and the rejection of good product.

### Easy Operation for Optimum Efficiency

The operator interface is provided via a robust, intuitive menu driven membrane key panel. This offers simple set-up routines and maximum inspection process control through Safeline's proven Signature software platform.

### Reliable in the Harshesht Environments

Sealed to IP69K standard, the rugged heavy duty wash down construction is designed to withstand the rigours of the hostile environments found in meat and food processing plants. Dirt traps have been eliminated and easy clean stainless steel surfaces throughout make the HDS pipeline system suitable for use in the harshesht conditions.



### Easy Integration With Leading Vacuum Fillers and Process Lines

HDS pipeline systems have been designed for close integration with leading vacuum filler machines. The robust, mobile stainless steel stand is designed to fit around key elements of process equipment allowing closer coupling into the process line.

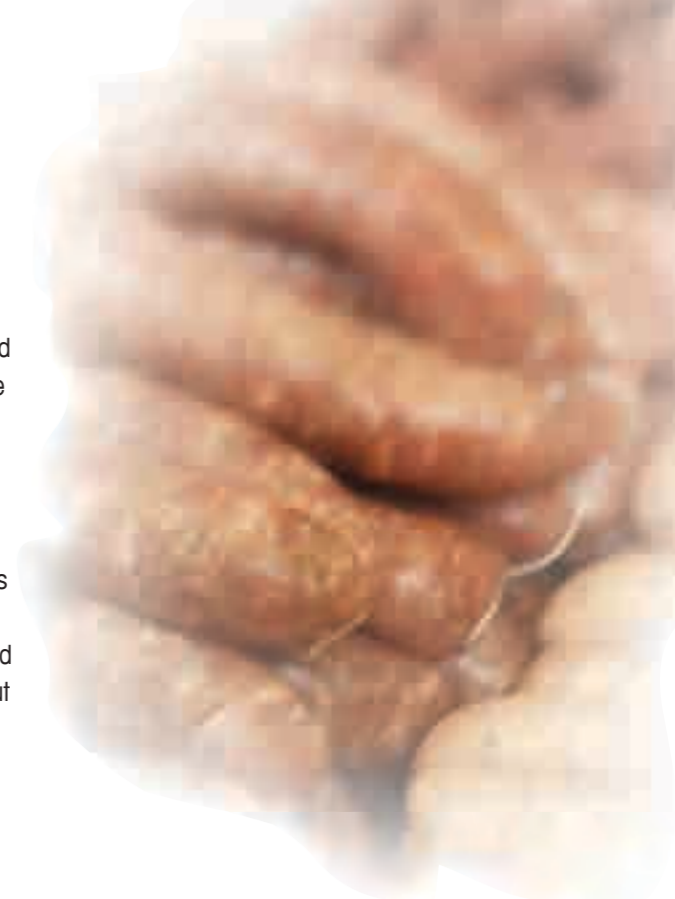
Large, fully rotating castors facilitate easy withdrawal from the process for cleaning and relocation on other lines as required.

Flexible height adjustment allows the detection head to be raised or lowered via a gas-strut to link up with the vacuum filler outlet. Fine adjustment to take account of uneven floors is provided via a hygienically designed screw feature on each individual castor.

### Heightened Product Quality Through Reduced Product Creaming

Increased length of product flow gives rise to the fats in some food products being unevenly distributed towards the outside of the sausage or tube pack - an effect known as "creaming."

The use of Safeline's patented ICF (Internal Cancellation Field) technology allows the metal fittings of the throughput pipe and other process equipment to be positioned closer to the detection head without affecting the detector performance. This facilitates a short throughput pipe, essential to avoid product creaming and gives the added benefit of a compact system size to reduce space requirements.



### Data Collection Solutions

HDS pipeline systems can be linked via a serial connection or Ethernet technology to a wide range of factory data management systems. This enables real time data collection and transfer to be realised.

